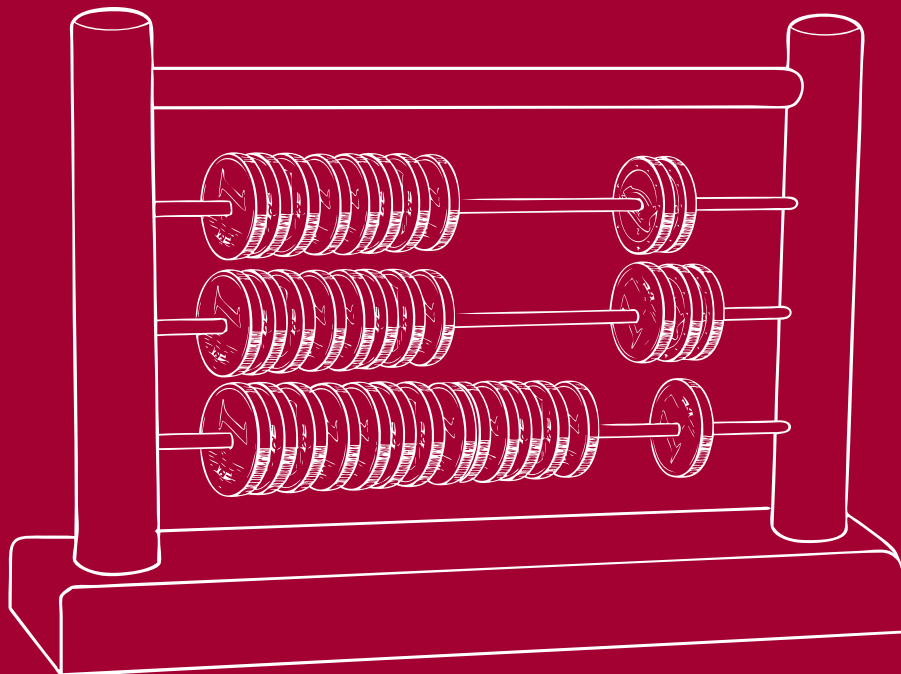


MASON  
HAYES &  
CURRAN

*Dublin, London  
& New York*

# *Financial Services*





**Christine O'Donovan**  
*Partner, Head of Financial Services*  
t +353 1 614 5082  
e codonovan@mhc.ie

## About Us

We are a leading adviser in the financial services sector in Ireland. Our diverse practice area includes core financial services requirements for domestic and international providers of finance, from private equity, corporate lending and project finance to capital markets, and financing arrangements for all asset classes, from real estate to aircraft and intellectual property to commercial paper.

Our multidisciplinary team also provides complex restructuring and insolvency advice to assist with sustaining business connections during restructuring.

We advise on loan portfolio sales on the bid and sale side.

Our team is led by Christine O'Donovan. Key practice areas and details of our professionals are set out below:

- Acquisition & leveraged finance
- Aviation & asset finance
- Corporate lending & SME
- Debt capital markets
- Project finance
- Regulation
- Commercial Real Estate & loan portfolio disposals and acquisitions
- Private equity & venture capital funding
- Restructuring & insolvency
- Investment funds
- Trade finance



### Christine O'Donovan

*"...is a very efficient and no-nonsense lawyer, and is able to get deals executed quickly."*

*"exceptionally commercial, and able to put a lot of perspective into deals and its negotiation."*

Chambers & Partners Europe, 2015



**Jenny Ahern**  
*Partner*

t +353 1 614 5094  
e jahern@mhc.ie

## *Acquisition & Leveraged Finance*

We have built up a substantial body of experience in all aspects of domestic and cross-border leveraged financing transactions. These include syndicated loan facilities, high-yield debt offerings, second lien financings and mezzanine capital investments, often incorporating complex tax driven multi-jurisdictional holding structures. Our clients include lenders, private equity and venture capitalists and corporate borrowers who are amongst the most sophisticated consumers of legal services in this sector.

Our structuring and implementation of legal solutions is seamless and unobtrusive while our technical ability, proactive transaction management and pragmatism is a given.

The sector has seen a significant amount of refinancing and restructuring activity over recent years and we continue to advise on a number of new financing transactions into 2015.

Areas of relevant expertise include:

- Leveraged acquisition finance
- Corporate and structuring advice
- Corporate services, corporate governance and compliance
- Taxation advice
- Bankruptcy and insolvency advice



**Christine O'Donovan**  
*Partner, Head of Financial Services*

t +353 1 614 5082  
e codonovan@mhc.ie

## *Aviation & Asset Finance*

International Aviation Services is a dynamic industry sector in Ireland. We are proud to be able to provide legal services relating to aircraft financing, leasing, corporate services and advice, tax and aviation regulation to this vibrant and significant industry sector.

Our Aviation & Asset Finance practice consists of a dynamic and market leading team, who have acquired relevant experience in-house and in private practice, which gives us a unique perspective and ability to understand client demands.

We advise and represent participants in the aviation sector on:

- Aircraft and engine leasing
- Asset portfolio sales and purchases
- Asset financing and secured lending
- Cape Town Convention security requirements
- Export credit supported financing
- Structured finance vehicles
- Aviation regulation

Our team also advise on other asset classes, including shipping and rail. We are a member of the Rail Working Group (RWG) and participate in the preparation for the implementation of the Luxembourg Rail Protocol. We advise on wet or dry shipping transactions, including dispute resolution and advisory work. Our holistic industry approach enables us to provide services for all asset classes during the life cycle of the transaction or life cycle of the corporate entity, including assisting with tax efficient exit mechanisms.



**Daniel Kiely**  
*Partner*

t +353 1 614 5249  
e dkiely@mhc.ie



**Micheál Grace**  
*Partner*

t +353 1 614 5804  
e mgrace@mhc.ie

## *Corporate Lending/ Restructuring/CRE*

We advise a number of leading Irish and international banks and financial institutions on domestic and cross-border bilateral and syndicated facilities, as well as property and acquisition financing.

We act on behalf of a multiple of institutions and new entrants operating and doing business in this jurisdiction, on the bidder and vendor side of loan/asset sales, restructuring on behalf of senior creditors, syndicate groups and lending institutions on arrangements for strategies across a range of stressed debt. We also provide legal banking advice to a large number of leading Irish and international corporates, borrowing and transacting in this jurisdiction.

Areas of expertise:

- Corporate banking
- Leveraged acquisition finance
- Commercial Real Estate financing
- Acting for bidders and vendors on loan sales
- Restructuring and work out arrangements in the Corporate and the SME sector



**Neil Campell**  
*Partner*

t +353 1 614 2487  
e ncampbell@mhc.ie

## *Debt Capital Markets*

We have a comprehensive financial services offering, which includes sophisticated and experienced advice in relation to debt capital markets and alternative sources of funding to the traditional bank/credit institution route. We have acted for investors, promoters, issuers and advisors to bond issuances, debt programmes and other instruments utilised by corporates to fund their activities.

We have advised on capital market funding relating to substantial share acquisition transactions, bespoke financing rounds, and as part of structured finance arrangements, to include Qualifying Investment Funds (QIFs), Section 110 vehicles and Irish incorporated vehicles which have availed of this type of financing alternative.

The challenges of the recent credit crisis has provided us with certain opportunities to increase and enhance its financial services and debt capital markets offering. We have been engaged on:

- Listed and non-listed corporate bonds
- Secured and unsecured offers
- Taxation, regulatory and corporate advice
- Section 110 vehicles



**Daragh Bohan**  
*Partner*

t +353 1 614 2315  
e dbohan@mhc.ie



**William Carmody**  
*Partner*

t +353 1 614 5097  
e [wccarmody@mhc.ie](mailto:wccarmody@mhc.ie)

## *Project Finance*

Our Project Finance team works with a wide range of clients such as government, banks and building contractors to advise them on the development, financing, construction and operation of projects across a range of sectors.

We have particular specialist experience and are market leaders in the area of renewable energy projects. Our team has been recognised by Infrastructure Journal as one of the top 10 European legal advisors in wind energy and in the top 20 legal advisors for renewable energy finance projects on recent deals. We have advised on wind energy projects in excess of 500MW and a combined funding value of approximately €600 million. We have also advised on waste to energy projects.

Our expertise means we can provide all the necessary advice relating to renewable and conventional energy projects, which can be complex, and benefit from early liaison and interaction between the various disciplines involved. Key areas include:

- Project finance
- Renewable Energy
- Conventional energy projects
- Multi-jurisdictional lending transactions
- Tax-based lending structures
- Acquisition finance
- Refinancing and financial restructuring of renewable projects



**Fionán Breathnach**  
*Partner,  
Head of Regulatory*

t +353 1 614 5080  
e [fbreathnach@mhc.ie](mailto:fbreathnach@mhc.ie)

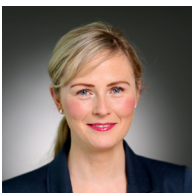
## *Regulation*

Our Financial Services Regulation team provides practical, commercial and strategic advice to financial services businesses operating in Ireland.

The range of services includes advising new entrants to the Irish market, supporting clients through the relevant authorisation process with the Central Bank of Ireland, advising on regulatory matters, reviewing existing practices and procedures to ensure compliance and providing training to compliance and risk management teams. We currently represent international banking and insurance operations in Ireland, and a range of investment firms, asset managers, fund service providers, e-money and payment institutions, money transmitters, money lenders and brokers.

Key areas include:

- Application and authorisations of a wide range of financial services entities
- Transfers of insurance policies involving court schemes of arrangement
- Regulatory capital requirements
- Derivative transactions and prime brokerage arrangements
- Consumer credit and consumer protection matters
- MiFID regulations
- Second E-Money Directive and the Payment Services Directive
- Investigations conducted by the Central Bank and its administrative sanctions procedure



**Rowena Fitzgerald**  
*Partner*

t +353 1 614 5891  
e [rfitzgerald@mhc.ie](mailto:rfitzgerald@mhc.ie)



**Louis Burke**  
*London Banking Head*  
 t +44 20 3178 3368  
 e lburke@mhc.ie

## *London Office*

Louis is Head of Banking in our London office and a member of our Financial Services team. Louis advises institutional and private clients on a wide range of practice areas including project and acquisition finance, corporate lending, corporate restructuring, with a particular focus on alternative forms of finance, including asset based lending, factoring and invoice discounting.

Louis also advises in relation to the enforcement of loans/security and the acquisition/sale of loan portfolios.

Areas of expertise:

- Corporate banking
- Corporate restructuring
- Cross border transactions
- Leveraged acquisition finance
- Property finance
- Syndicated lending
- Asset based lending

## *Our team works closely with:*

### *Commercial Real Estate*



**Kevin Hoy**  
*Partner,  
 Head of Real Estate*  
 t +353 1 614 5812  
 e khoy@mhc.ie

### *Tax*



**Robert Henson**  
*Tax Partner*  
 t +353 1 614 2314  
 e rhenson@mhc.ie

### *Restructuring & Insolvency*



**Maurice Phelan**  
*Partner, Head of  
 Dispute Resolution*  
 t +353 1 614 5083  
 e mphelan@mhc.ie

### *Investment Funds*



**Fionán Breathnach**  
*Partner, Head of  
 Investment Funds*  
 t +353 1 614 5080  
 e fbreathnach@mhc.ie



**Conor Durkin**  
*Partner,  
 Investment Funds*  
 t +353 1 614 5261  
 e cdurkin@mhc.ie



**Rowena Fitzgerald**  
*Partner,  
 Investment Funds*  
 t +353 1 614 5891  
 e rfitzgerald@mhc.ie

## *What people say about us...*

### *Our Financial Services team*

*"Quick and responsive, and strong in several areas. Very impressive overall."*

Chambers & Partners Europe, 2016

### *Our Financial Services team*

*"very efficient and commercial."*

Legal 500, 2016

### *Our Banking & Finance team*

*"impressive team"  
"a solution-oriented approach"*

Legal 500, 2015

### *Our Asset Finance team*

*"The team is extremely good at managing the transaction and getting it done; it works very closely together to get you across the line."*

Chambers & Partners Europe, 2015

### *Our Banking & Finance team*

*"An excellent firm. It is very popular in the market."*

Chambers & Partners Europe, 2014

### *Our Investment Funds team*

*Advised CAPREIT on its establishment of Irish Residential Properties REIT*

Legal 500, 2015

### *Our Projects team*

*"notable private and public sector experience of PPP, renewable energy and infrastructure projects."*

Chambers & Partners Europe, 2015

### *Our Commercial Real Estate team*

*"The team listens to our needs, takes on board what we require, is very focused and keeps to tight deadlines."*

Chambers & Partners Europe, 2015

MASON  
HAYES &  
CURRAN

MHC.ie

*Dublin*

South Bank House  
Barrow Street, Dublin  
D04 TR29  
Ireland

*t* +353 1 614 5000  
*e* dublin@mhc.ie

*London*

1 Cornhill  
London  
EC3V 3ND  
United Kingdom

*t* +44 20 3178 3366  
*e* london@mhc.ie

*New York*

1450 Broadway  
39th Floor, New York  
NY 10018  
USA

*t* +1 646 862 2028  
*e* newyork@mhc.ie